

## Dosing Pot Installation Manual

### Introduction

Dosing pots are required in order to feed liquid chemicals, such as corrosion inhibitors or antifreeze, into closed systems safely.

All Dosing Pots are supplied with:

- |                      |                      |
|----------------------|----------------------|
| 1. Drainage Valve    | 6. Return Flow Valve |
| 2. Flow Valve        | 7. Non Return Valve  |
| 3. Wall Brackets     | 8. Filling Valve     |
| 4. Steel Pipe Body   | 9. Tundish           |
| 5. Air Release Valve |                      |

### Installing & Maintaining Your Dosing Pot

It is important that the dosing pot is correctly attached to the system to allow rapid chemical feed. Choose a location near a main pipe run or system header. Fasten the chemical dosing pot securely in place using the brackets attached to the back of the steel body.

Pipe the drain valve away to a safe disposal point. It is best to connect to the system across the flow and return pipe work. The flow connection should be made to the appropriately named "Flow Valve" at the bottom of the pot and the return connection made to the appropriately named "Return Valve".

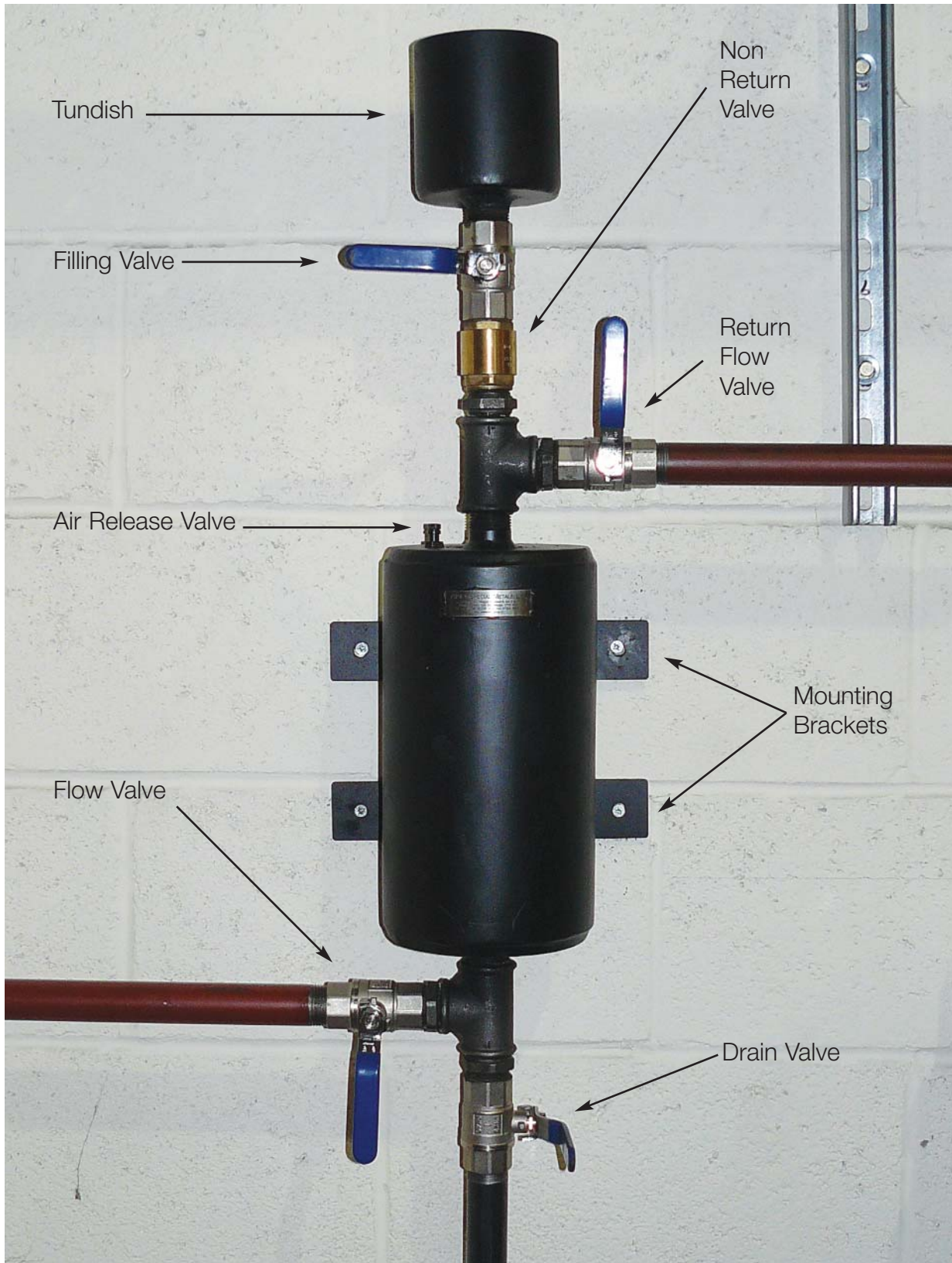
For all working conditions please refer to the data sheet provided. The Dosing Pot should not be operated outside of these limits.

After long term use the valves may wear. They should be inspected periodically and if necessary replaced. The Dosing Pot itself should also be checked periodically for corrosion and other wear. A 1mm corrosion allowance has been incorporated into the design. If corrosion is found to be greater than 1mm the pot should be removed and replaced.

A non return valve is fitted below the filling valve to prevent blow back occurring. The Dosing Pot could reach temperatures of up to 120oc.

**PPE appropriate for the working temperature and chemicals being used must be worn. Hazard Warnings should be fitted at the installation location and be visible to the operator in order to prevent the operator from causing harm to themselves or others.**

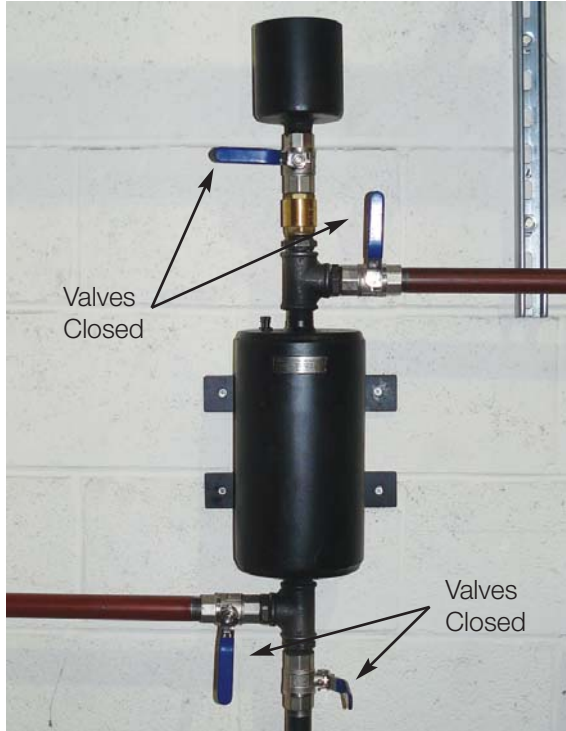
## Dosing Pot Components



## Dosing Pot Installation Manual

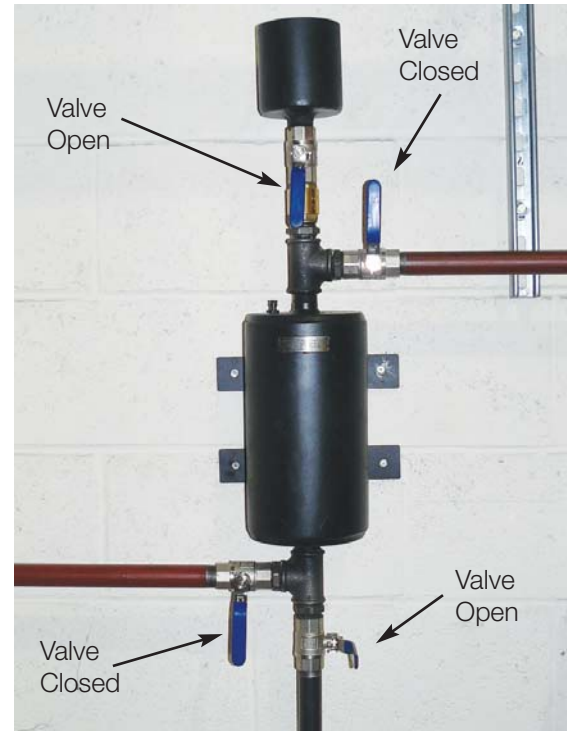
### Step 1 - Isolate Pot

- Close All Valves



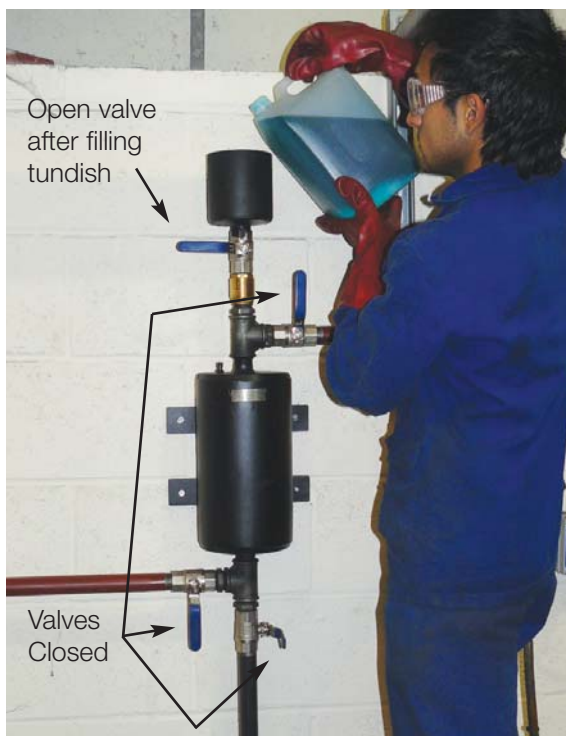
### Step 2 - Drain Pot

- Ensure drain is piped away to safe disposal
- Open Filling and Drain Valves



### Step 3 - Fill Pot

- Close Drain Valve
- Pour Chemical into Tundish
- Open Filling Valve



### Step 4 - Release Air

- Open Air Release Valve until liquid appears



### Step 5 – Inject Chemicals

- Close Filling and Drain Valves
- Open Flow and Return Valves

