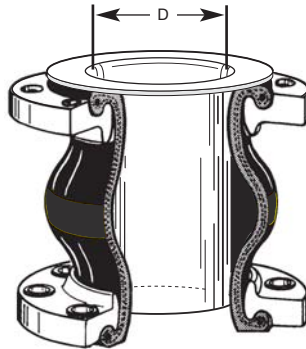
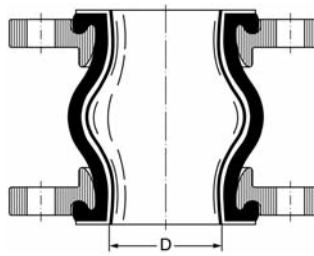
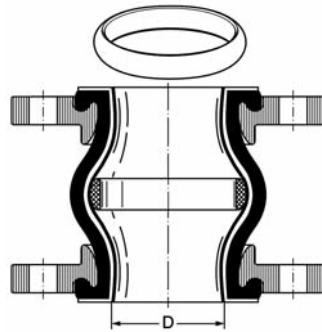
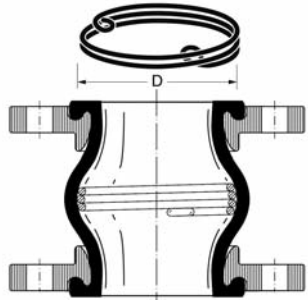
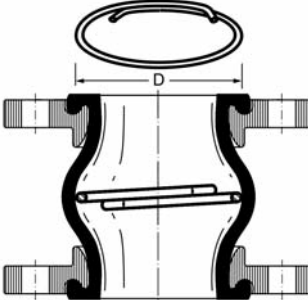
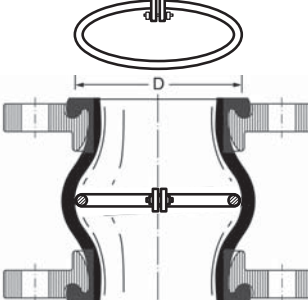




Section 1	Construction Details Materials	DN	D	Part Number Type	
		Diam. Nom. mm	≈mm		
<p>Available for all ERV types DN 25 - 600. Thickness of stainless steel armouring depending on DN between 1 and 3 mm. Lateral and angular movements are significantly reduced.</p> <p>Conical sleeves available on request.</p> <p>Please note: Between the bead (flange surface) of the inner protection sleeve and the counter flange an additional seal must be used.</p>	25	22	ERV... 25...SR ¹⁾	<p>Type SR</p>  <p>ERV with inner protection sleeve of stainless steel to prevent abrasion of the rubber liner, i.e. by granulates. Please note: the nominal bore is reduced.</p>	
	32	22	ERV... 32...SR		
	40	30	ERV... 40...SR		
	50	38	ERV... 50...SR		
	65	53	ERV... 65...SR		
	80	72	ERV... 80...SR		
	100	88	ERV...100...SR		
	125	112	ERV...125...SR		
	150	138	ERV...150...SR		
	200	190	ERV...200...SR		
	250	235	ERV...250...SR		
	300	290	ERV...300...SR		
	350	320	ERV...350...SR		
	400	390	ERV...400...SR		
	500	490	ERV...500...SR		
	600	590	ERV...600...SR		
<p>Available for DN 25 - 300. Seamless lining with sealing surface, virgin PTFE, approx. 1 mm thickness. Delivered only as complete factory mounted unit with flanges. Unmounted lining not available. The allowable movement range of the ERV is restricted by approximately 50%. FDA conform.</p>	25	26	ERV... 25...TA ¹⁾	<p>Type TA</p>  <p>ERV with PTFE - Lining. Used when the chemical resistance of the chosen ERV type is not sufficient. Suitable for all kinds of liquids in use. Admissible working temperature of expansion joint has to be observed. For working pressure up to 6 bar - not suitable for vacuum.</p> <p>¹⁾For rubber expansion joints DN 25 bellows DN 32 are used.</p>	
	32	26	ERV... 32...TA		
	40	34	ERV... 40...TA		
	50	44	ERV... 50...TA		
	65	59	ERV... 65...TA		
	80	72	ERV... 80...TA		
	100	92	ERV...100...TA		
	125	115	ERV...125...TA		
	150	138	ERV...150...TA		
	200	187	ERV...200...TA		
<p>Available for DN 50-300. Seamless PTFE lining as "TA" but additionally with factory mounted support ring of solid PTFE. The allowable movement range is restricted by approximately 50%. FDA conform.</p>	50	44	ERV...50...TAS	<p>Type TAS</p>  <p>ERV with PTFE lining and PTFE vacuum support ring. Properties like type TA, but also suitable for vacuum service, up to 70°C.</p>	
	65	59	ERV...65...TAS		
	80	72	ERV...80...TAS		
	100	92	ERV...100...TAS		
	125	115	ERV...125...TAS		
	150	138	ERV...150...TAS		
	200	187	ERV...200...TAS		
	250	235	ERV...250...TAS		
300	285	ERV...300...TAS			
<i>ERV INNER SLEEVES AND PTFE LINING</i>					

Specifications subject to change without notice - Copyright ELEAFLEX

Vaccum Support Spiral and Ring for ERV

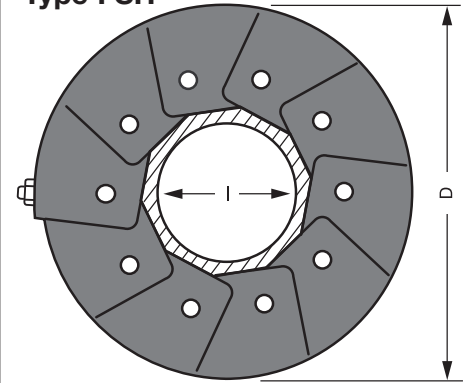
	DN	D	Part Number	
	Diam. Nom.	≈mm	Type	
<p>Available for DN 50 - 300. Number of turns and material thickness vary with DN. The vacuum support spiral can be easily mounted subsequently. No 1 restriction of admissible pressure for ERV. Movement range restricted by approximately 50%.</p>	50	85	ERV... 50...VSD	<p>Type VSD</p>  <p>ERV with vacuum support spiral. Spiral of AISI 316 Ti, used when the vacuum resistance of the chosen ERV is not sufficient.*)</p>
	65	110	ERV... 65...VSD	
	80	130	ERV... 80...VSD	
	100	180	ERV...100...VSD	
	125	230	ERV...125...VSD	
	150	270	ERV...150...VSD	
	200	320	ERV...200...VSD	
	250	420	ERV...250...VSD	
	300	500	ERV...300...VSD	
<p>Available for DN 125 - 600. The vacuum support rings can be easily mounted subsequently. No restriction of admissible pressure for ERV. Movement range restricted by approximately 50%.</p>	125	175	ERV...125...VSR	<p>Type VSR</p>  <p>ERV with vacuum support ring. Ring of AISI 316 Ti, used when the vacuum resistance of the chosen ERV is not sufficient.*)</p>
	150	190	ERV...150...VSR	
	200	260	ERV...200...VSR	
	250	300	ERV...250...VSR	
	300	350	ERV...300...VSR	
	350	410	ERV...350...VSR	
	400	480	ERV...400...VSR	
	500	580	ERV...500...VSR	
	600	680	ERV...600...VSR	
<p>Available for DN 500 - 1000. The vacuum support rings can be easily mounted subsequently. No restriction of admissible pressure for ERV. Movement range restricted by approximately 50%.</p>	500	545	ERV...500...VSRV	<p>Type VSRV</p>  <p>ERV with vacuum bolted support ring. For maximal vacuum resistance of the selected ERV. Bolted ring in stainless steel 1.4571.*)</p>
	600	640	ERV...600...VSRV	
	700	780	ERV...700...VSRV	
	800	850	ERV...800...VSRV	
	900	1000	ERV...900...VSRV	
	1000	1085	ERV..1000...VSRV	

*) for Type VSD and VSR: Admissible vacuum see catalogue pages type specific ERV data sheets.



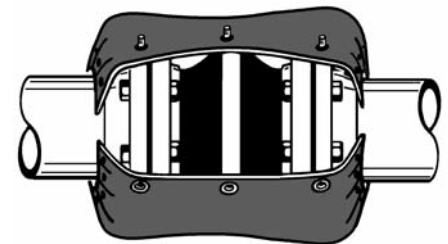
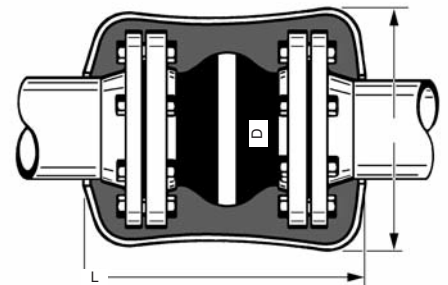
Section 1	DN mm	I Ø mm	D Ø mm	Length L	Part Number Type
Type for ERV with flanges according to DIN PN 10/16					
	25	30	170	260	FSH for ERV 25x130
	32	40	190		FSH for ERV 32x130
	40	45	195		FSH for ERV 40x130
	50	60	210		FSH for ERV 50x130
	65	75	225		FSH for ERV 65x130
	80	90	240		FSH for ERV 80x130
	100	110	260		FSH for ERV 100x130
	125	135	285		FSH for ERV 125x130
	150	160	330		FSH for ERV 150x130
	200	220	385		FSH for ERV 200x130
	250	265	435		FSH for ERV 250x130
	300	315	485		FSH for ERV 300x130
	25	30	170		300
	32	40	190	FSH for ERV 32x160	
	40	45	195	FSH for ERV 40x160	
	50	60	210	FSH for ERV 50x160	
	65	75	225	FSH for ERV 65x160	
	80	90	240	FSH for ERV 80x160	
	100	110	260	FSH for ERV 100x160	
	125	135	285	FSH for ERV 125x160	
	150	160	330	FSH for ERV 150x160	
	200	220	385	FSH for ERV 200x160	
	250	265	435	340	FSH for ERV 250x200
	300	315	485		FSH for ERV 300x200
Type for ERV with flanges according to VG 95959-1 (German Naval Standard)					
	32	40	150	260	FSH - M for ERV 32x130
	40	45	155		FSH - M for ERV 40x130
	50	60	170		FSH - M for ERV 50x130
	65	75	185		FSH - M for ERV 65x130
	80	90	200		FSH - M for ERV 80x130
	100	110	220		FSH - M for ERV 100x130
	125	135	245		FSH - M for ERV 125x130
	150	160	270		FSH - M for ERV 150x130
	200	215	345		FSH - M for ERV 200x130
	250	265	395		FSH - M for ERV 250x130
	32	40	150		300
	40	45	155	FSH - M for ERV 40x160	
	50	60	170	FSH - M for ERV 50x160	
	65	75	185	FSH - M for ERV 65x160	
	80	90	200	FSH - M for ERV 80x160	
	100	110	220	FSH - M for ERV 100x160	
	125	135	245	FSH - M for ERV 125x160	
	150	160	270	FSH - M for ERV 150x160	
	200	215	345	FSH - M for ERV 200x160	
	250	265	395	340	

Type FSH



Flame protection cover for ERV rubber expansion joints, made of several layers of glass fiber fabric with a surface cover of silver-coloured high temperature resistant silicone-aluminium-glas fabric. Screws, nuts and washers of brass. It reliably protects the expansion joint against radiation heat and direct flames up to 800° C for 30 minutes. The flame protection cover is resistant against oil and chemical influences as well as against ageing and weathering.

Because of its split design the flame protection cover can be mounted subsequently or re-opened. The dimensions have been chosen in such a way that also the counter flanges are completely covered. The allowed range of movement is not restricted.



Picture shows open condition