

Expansion Joints - Metallic

Axial

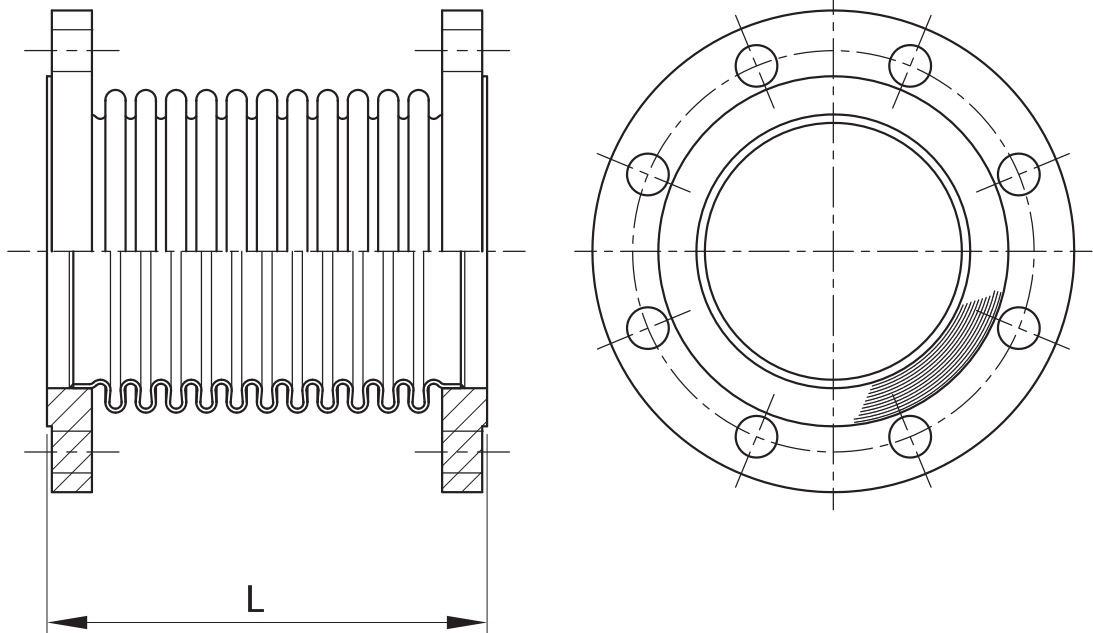
NB mm	Movement +/-	Length (L) mm	Spring rate N/mm
50	25	208	40
65	25	208	75
80	25	208	99
100	25	208	130
125	38	314	238
150	38	314	226
200	50	352	232
250	50	352	247
300	50	352	256

Scope:

PN Flanges carbon steel
 Bellows 321 Stainless Steel

Rating:

Maximum Working Pressure 16 Barg
 Test Pressure 24 Barg
 Temperature Range -20 / +120° C
 EJMA Cycle 1000



FlexEJ design and manufacture metallic expansion joints based on the requirements of our customers.

Please contact us to discuss your application.

Expansion Joints - Metallic

Lateral

NB mm	Movement +/-	Length (L) mm	Spring rate Nmm
50	75	1000	1
65	75	1000	1
80	75	1000	2
100	75	1000	4
125	75	1000	6
150	75	1000	8
200	75	1000	17
250	75	1000	33
300	75	1000	66

Scope:

PN Flanges, carbon steel

Bellows 321 Stainless Steel

Tie rods and spherical washers

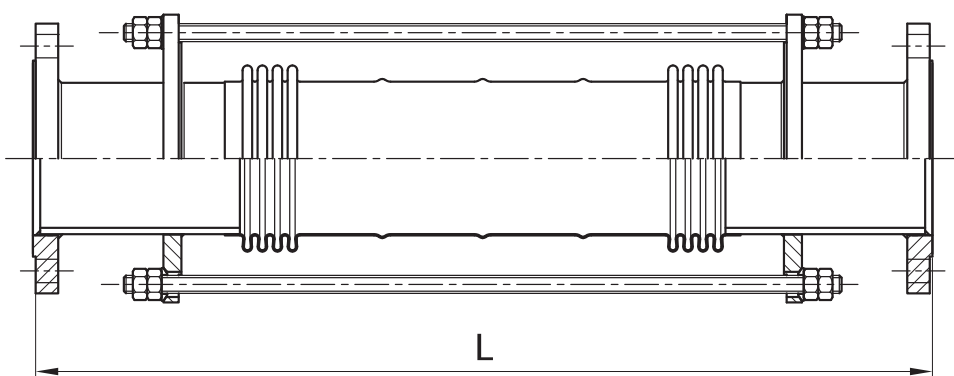
Rating:

Maximum Working Pressure 16 Barg

Test Pressure 24 Barg

Temperature Range -20 / +120° C

EJMA Cycle 1000



FlexEJ design and manufacture metallic expansion joints based on the requirements of our customers.

Please contact us to discuss your application.

Expansion Joints - Metallic

Hinge

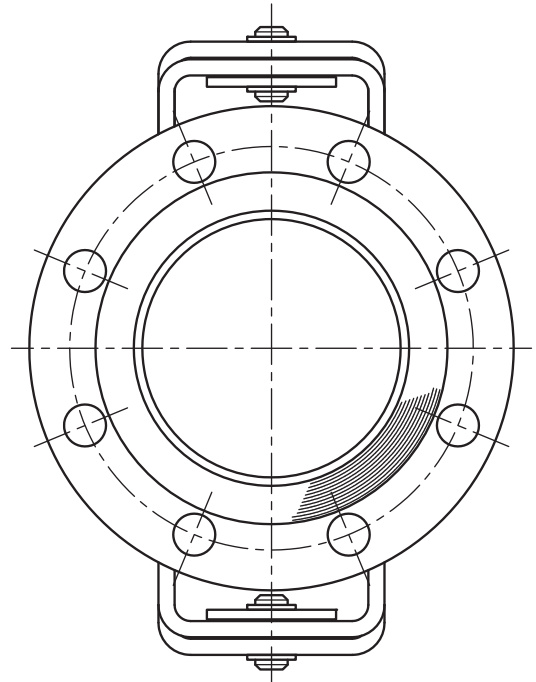
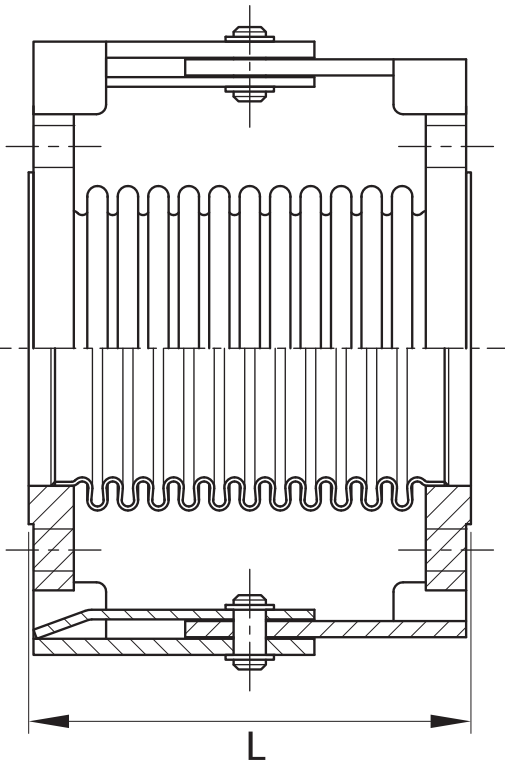
NB mm	Movement +/-	Length (L) mm	Spring rate Nm/°
50	5	100	1.7
65	5	110	3.7
80	5	120	6.2
100	5	140	8.7
125	6.5	206	19.7
150	6.5	200	23.4
200	7	222	36.5
250	3.5	220	98
300	3.5	220	121

Scope:

PN Flanges, carbon steel
 Bellows 321 Stainless Steel
 Hinges, carbon steel

Rating:

Maximum Working Pressure 16 Barg
 Test Pressure 24 Barg
 Temperature Range -20 / +120° C
 EJMA Cycle 1000



FlexEJ design and manufacture metallic expansion joints based on the requirements of our customers.

Please contact us to discuss your application.

Expansion Joints - Metallic

Gimbal

NB mm	Movement +/-	Length (L) mm	Spring rate Nm/°
50	5	100	1.7
65	5	110	3.7
80	5	120	6.2
100	5	140	8.7
125	6.5	206	19.7
150	6.5	200	23.4
200	7	222	36.5
250	3.5	220	98
300	3.5	220	121

Scope:

PN Flanges, carbon steel

Bellows 321 Stainless Steel

Gimbal, carbon steel

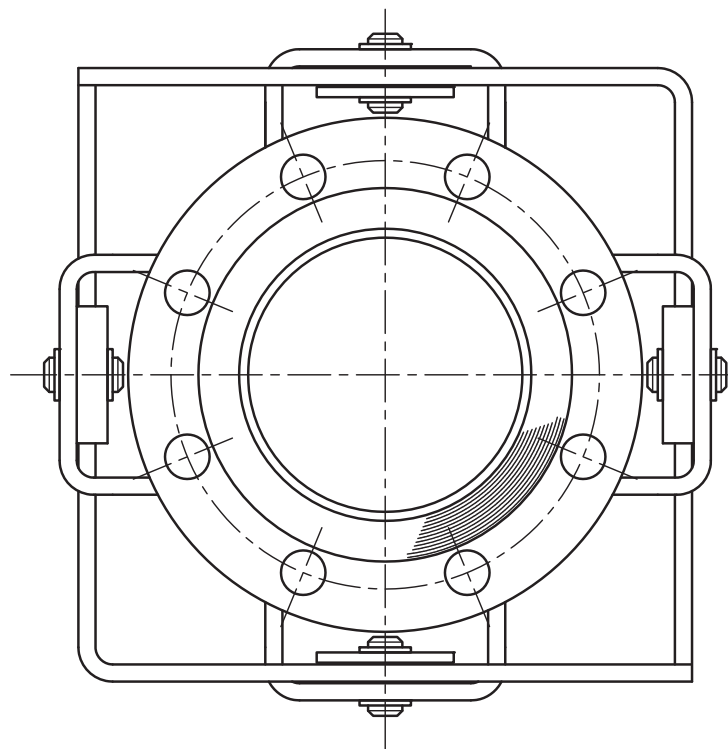
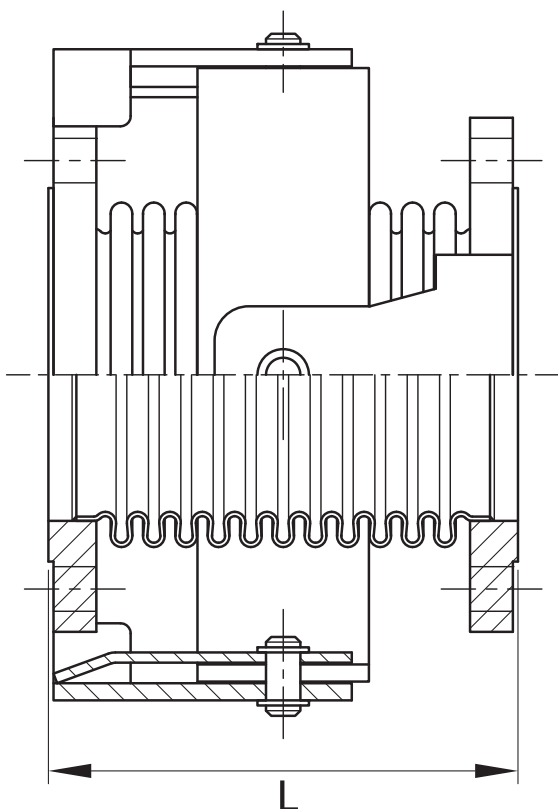
Rating:

Maximum Working Pressure 16 Barg

Test Pressure 24 Barg

Temperature Range -20 / +120° C

EJMA Cycle 1000



FlexEJ design and manufacture metallic expansion joints based on the requirements of our customers.

Please contact us to discuss your application.