

HVAC Dosing Pots

Safety notes

Safe installation, operation and maintenance procedures must be established for this equipment based on the procedures of the site and environment in which it operates. These procedures must be in place before installation, operation and maintenance occurs.

Prior to starting any procedure check health and safety requirements with the person responsible for the area and ensure all required precautions, PPE and permissions are in place.

The following list of potential risks is not exhaustive; all those working with the equipment must take the necessary steps and advice to ensure safety:

- Pressurised equipment
- Hazardous fluids
- High temperatures
- Unrestrained piping and equipment
- Handling and lifting

Dosing pot components

- 1 Tundish
- 2 Filling valve
- 3 Non return valve
- 4 Return flow valve
- 5 Air release valve
- 6 Wall brackets
- 7 Steel pipe body
- 8 Flow valve
- 9 Drainage valve

Pre-installation check

Check the system rating does not exceed the rating of the product to be fitted – 10 Barg and 110°C.

The product is supplied with DN25 BSP PN 40 valves for connections.

These products are generally connected to main header piping.

The best location for the product must be determined by the installer given the local conditions and system arrangement.

Installation

Mount the chemical dosing pot securely in place using the brackets attached to the back of the steel body.

Pipe up to each connection. The installer must ensure the access and collection arrangements are adequate – piping away from the drain valve is recommended as a safety precaution.

After long term use the valves may wear. They should be inspected periodically and if necessary replaced. The Dosing Pot itself should also be checked periodically for corrosion and other wear. A 1mm corrosion allowance has been incorporated into the design. If corrosion is found to be greater than 1mm the pot should be removed and replaced.

PPE appropriate for the working temperature and chemicals being used must be worn. Hazard warnings should be fitted at the installation location and be visible to the operator in order to prevent the operator from causing harm to themselves or others.

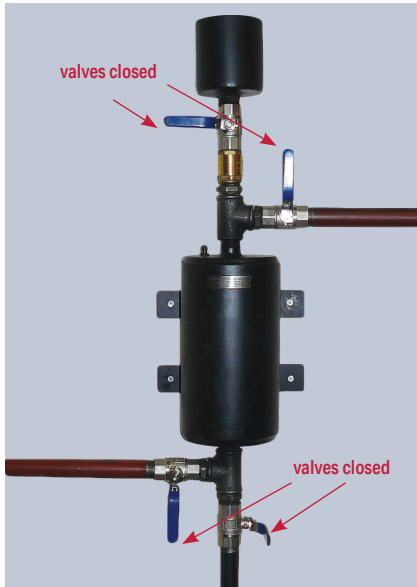


Product by FlexEJ Ltd

For technical assistance & sales
 t: +44 (0)1384 881188
 e: sales@flexej.co.uk

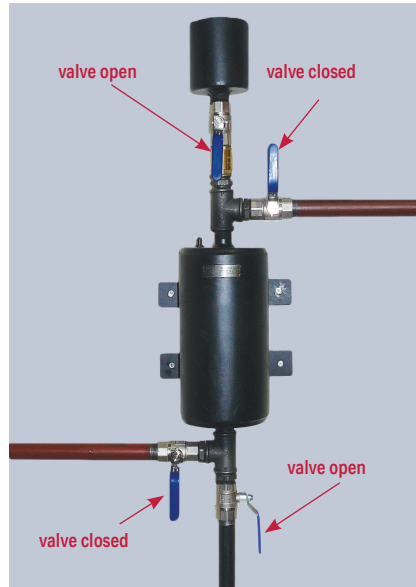
HVAC Dosing Pots

Operation



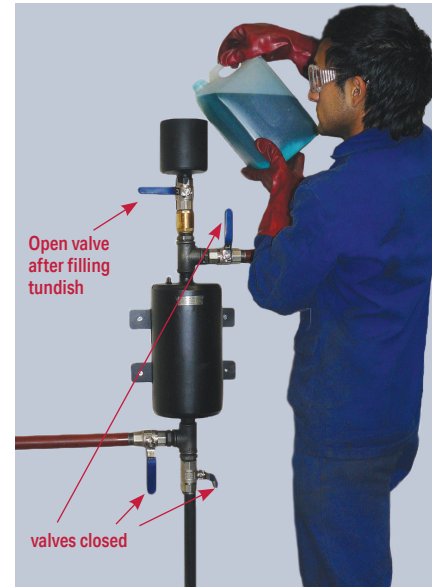
Step 1: Isolate pot

- Close all valves



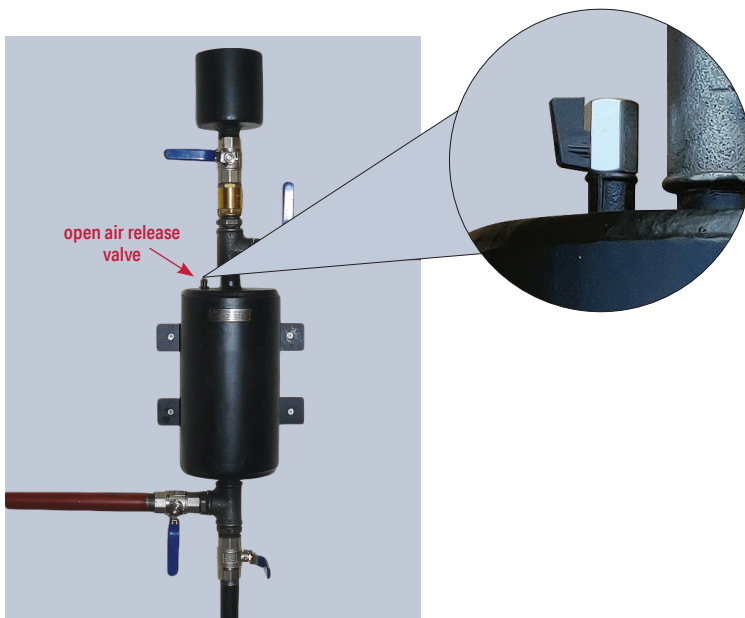
Step 2: Drain pot

- Ensure drain is piped away to safe disposal
- Open filling and drain valves



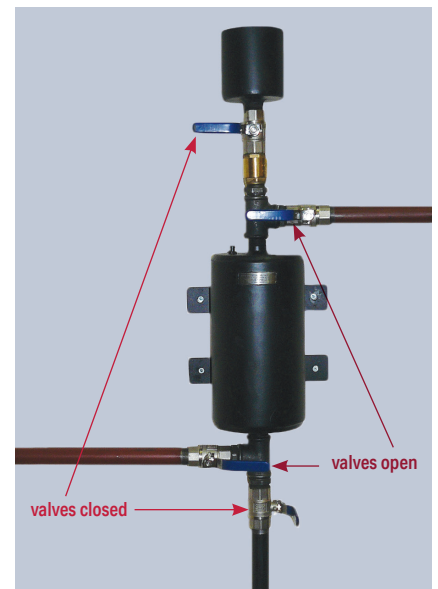
Step 3: Fill pot

- Close drain valve
- Pour chemical into tundish
- Open filling valve



Step 4: Release air

- Open air release valve until liquid appears



Step 5: Inject chemicals

- Close filling and drain valves
- Open flow and return valves

Product by FlexEJ Ltd

For technical assistance & sales
t: +44 (0)1384 881188
e: sales@flexej.co.uk