

HVAC Metal Bellows Flanged Axial & Pump Expansion Joints

Specification: Axial

Stainless steel 316 bellows designed to EJMA, stainless steel liner and carbon steel PN16 flanges. Available in long and short versions. Intended primarily for HVAC water applications – HTHW, heating, steam.

Not suitable for drinking water.

Specification: Pump

Stainless steel 316 bellows designed to EJMA, optional stainless steel liner and carbon steel PN16 flanges. Available with tied and untied flanges. Intended primarily for HVAC water applications – HTHW, heating.

Not suitable for drinking water.

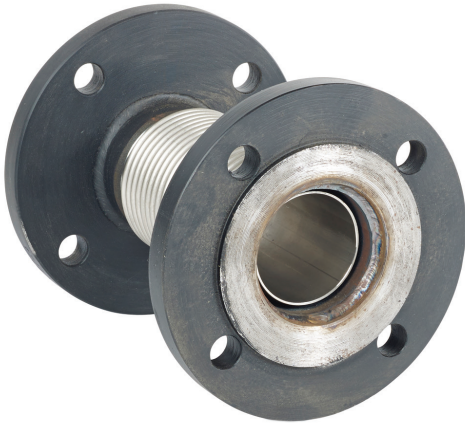
Materials

- Bellows 316 stainless steel
- Liner* Stainless steel
- Flanges PN16, carbon steel

Rating

16 Barg @ 110°C

* Optional



Product by FlexEJ Ltd

For technical assistance & sales
t: +44 (0)1384 881188
e: sales@flexej.co.uk

| Size | Length | Axial Comp. | Axial Ext. | Stock code |
|--------------|--------|-------------|------------|--------------|
| in. | mm | mm | mm | |
| DN065-2-1/2" | 210 | 25 | 25 | HVL0065PN16U |
| DN080-3" | 210 | 25 | 25 | HVL0080PN16U |
| DN100-4" | 210 | 30 | 30 | HVL0100PN16U |
| DN125-5" | 210 | 35 | 35 | HVL0125PN16U |
| DN150-6" | 250 | 35 | 35 | HVL0150PN16U |

| Size | Length | Axial Comp. | Axial Ext. | Stock code |
|--------------|--------|-------------|------------|--------------|
| in. | mm | mm | mm | |
| DN032-1 1/4" | 180 | 12 | 12 | HVS0032PN16U |
| DN040-1-1/2" | 180 | 15 | 15 | HVS0040PN16U |
| DN050-2" | 180 | 15 | 15 | HVS0050PN16U |
| DN065-2-1/2" | 180 | 15 | 15 | HVS0065PN16U |
| DN080-3" | 180 | 15 | 15 | HVS0080PN16U |
| DN100-4" | 180 | 15 | 15 | HVS0100PN16U |
| DN125-5" | 180 | 15 | 15 | HVS0125PN16U |
| DN150-6" | 180 | 15 | 15 | HVS0150PN16U |

| Size | Length | Lateral | Stock code | |
|--------------|--------|---------|--------------|--------------|
| | | | Untied | Tied |
| in. | mm | mm | | |
| DN050-2" | 130 | ±3 | HVP0050PN16U | HVP0050PN16T |
| DN065-2-1/2" | 130 | ±3 | HVP0065PN16U | HVP0065PN16T |
| DN080-3" | 130 | ±3 | HVP0080PN16U | HVP0080PN16T |
| DN100-4" | 130 | ±3 | HVP0100PN16U | HVP0100PN16T |
| DN125-5" | 150 | ±3 | HVP0125PN16U | HVP0125PN16T |
| DN150-6" | 150 | ±3 | HVP0150PN16U | HVP0150PN16T |