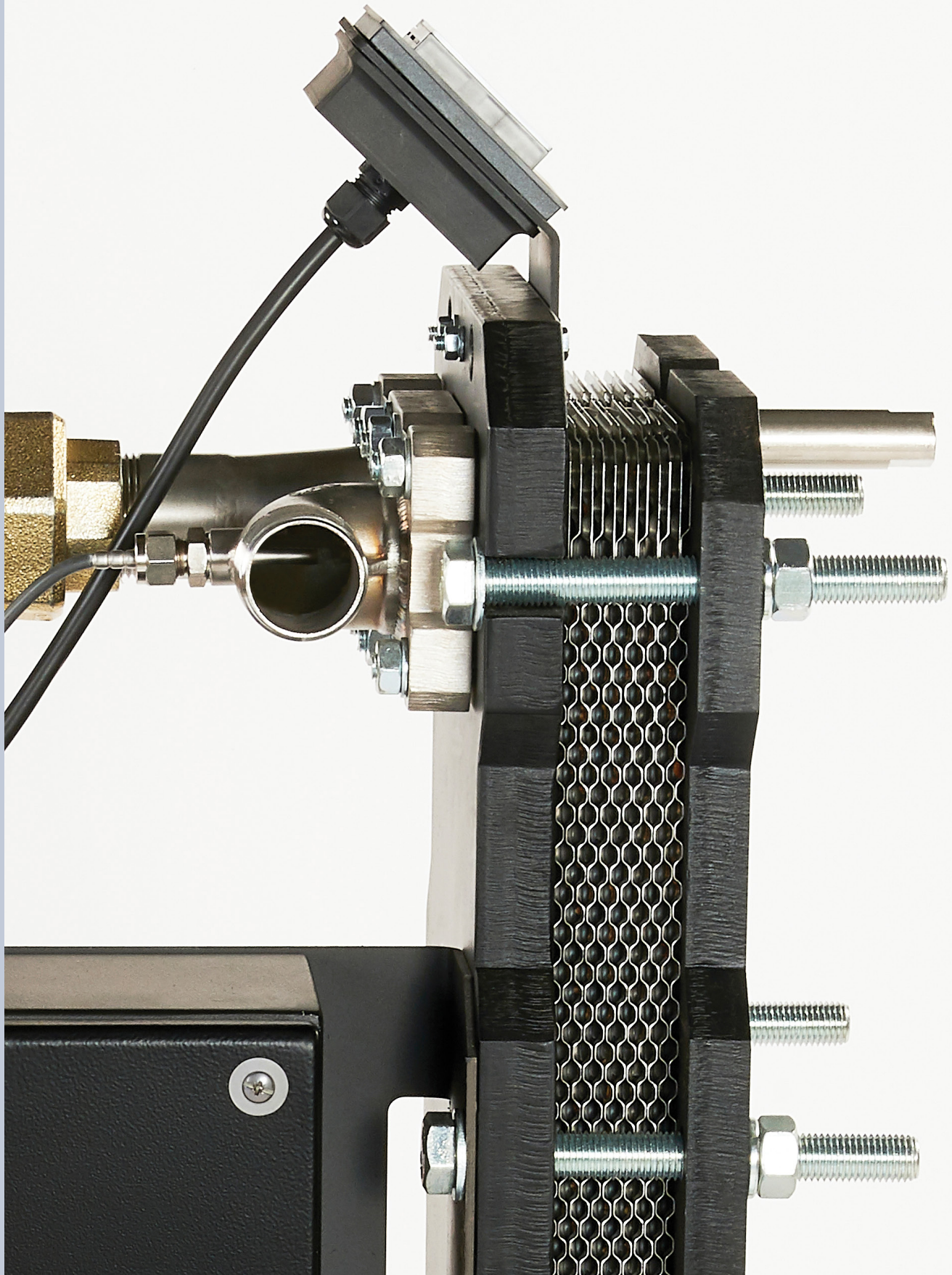


**FLEXEJ**

# PhexPak

Packaged plate heat exchanger



# PhexPak



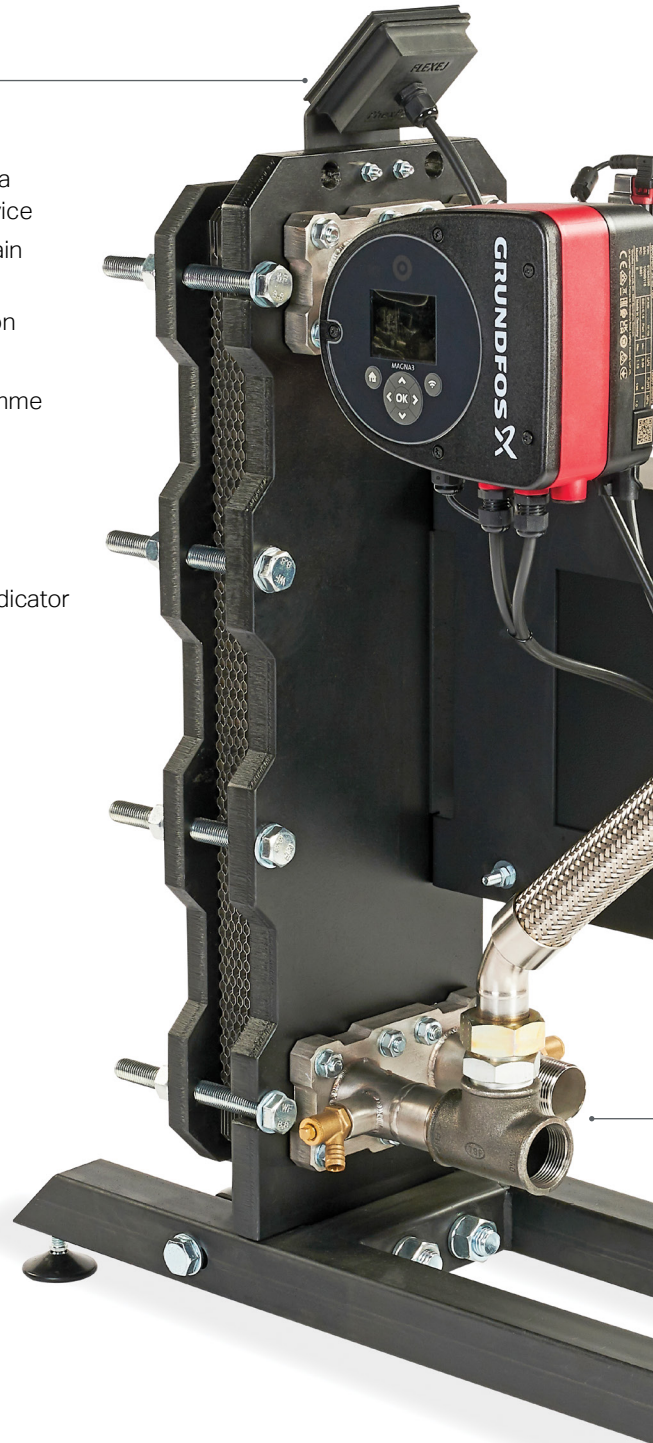
## Digital functionality

- App-based set up and operation via Bluetooth connection to smart device
- BACnet connectivity with daisy chain capability
- Built-in manual reset hi-limit function
- Time schedule programme
- Adjustable legionella cycle programme
- Local interface displays:
  - setpoint
  - secondary flow temperature
  - on/off
  - run/common fault/hi-limit fault indicator

**PhexPak** combines the efficiency and performance of a plate heat exchanger with the very best control components in the industry – the perfect solution for a vast range of heat transfer applications.

Designed for use with commercial DHW and LTHW applications, **PhexPak** can be supplied with a heat load duty from 50kW to 1200kW and with a primary supply temp up to 100°C.

**PhexPak** is an entirely modular and flexible product, meaning we can design and build the product to suit the exact requirements of your project. Contact our technical sales team to see how **PhexPak** can meet your needs.



# The flexible heat transfer solution



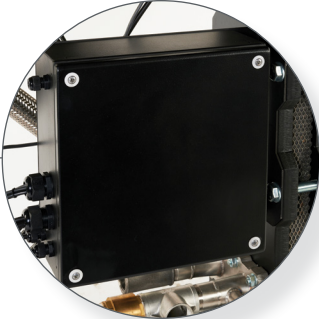
### Intelligent primary pump

- Ensures flow is efficiently maintained throughout the heat exchanger
- Available in single or twin head options (up to 600 kW heat load duty)



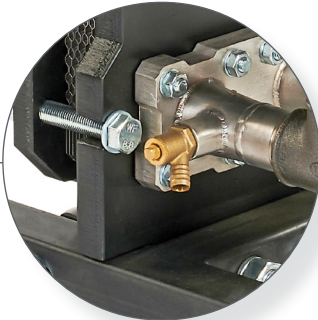
### 3 port mixing valve

- High speed, fully modulating actuator
- Plug & play cables for ease of connection and maintenance



### IP66 rated power supply panel

- MCB safety installed for all individual components



### Drain-off valve

- Included on primary and secondary sides for ease of maintenance



### Levelling feet

- Optional wheel kit available for ease of transport once on site

Power kW	DHW flow rate l/s	DIM 'A' mm	DIM 'B' mm	DIM 'C' mm	DIM 'D' mm
100	0.48	745	890	250	395
200	0.96	745	890	250	395
300	1.44	745	920	250	515
400	1.93	745	920	250	515
500	2.41	745	960	315	560
600	2.89	745	960	315	560
700	3.37	745	960	315	560
800	3.85	745	960	315	560
900	4.33	745	960	315	560
1000	4.81	745	960	315	560
1100	5.30	745	960	315	560
1200	5.78	745	960	315	560

### PhexPak additional options

- Primary hi-limit safety shut off valve
- Secondary circuit recirculation or transfer pump
- Insulation jacket

CAD files are available for all models on request

Performance table based on DHW secondary @10°C–60°C, 80°C primary supply with varying  $\Delta T$

### Scan for more information

